



JOIN FOR
POWER + BROADBAND
ON A 24 MONTH PLAN

and get unlimited data broadband
\$49 a month for the **FIRST** year
\$84 a month for the **SECOND** year



[HOME](#) | [LOCAL NEWS](#) | [SPORT](#) | [LIFESTYLE](#) | [WEATHER & TIDES](#) | [BLOGS & OPINION](#) | [GALLERIES](#) | [CLASSIFIEDS](#) | [WATERLINE](#) | [BAY DRIVER](#) | [COAST & COUNTRY NEWS](#)
[LETTERS TO THE EDIT](#) | [COUNCIL](#) | [MARINE](#) | [VIDEOS](#) | [WHAT'S ON](#) | [COMPETITIONS](#) | [RURAL](#) | [FUNERAL NOTICES](#) | [PROPERTY](#) | [PUBLICATIONS](#) | [TV & RADIO](#)



[sun creative](#)
 Do you need graphic design or printing?
[Home >> Local News >>](#)

Future proofing Papamoa surf club

Posted at 9:40am Wednesday 20 Apr, 2016 | By David Tauranga
david@thesun.co.nz

LATEST TRENDING

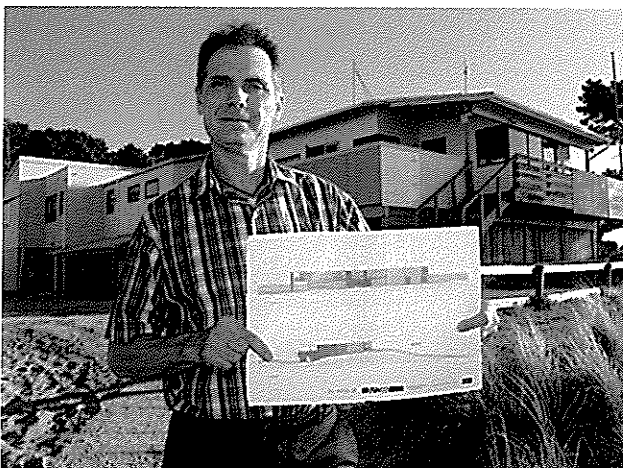
- Last minute dash for winning ticket
- Shaky morning for White Island
- Future proofing Papamoa surf club
- Police chase after patrol drive-off
- Waioeka Gorge now open
- Art gallery's three year plan
- New health strategy launched
- Bay cricket's newest life members
- A passion for Mount rugby
- Accused sexual offender evades police
- Climbing the tower to raise money
- Bay men accused of cash theft
- Surfing to success
- The future of WBOP rubbish
- BOP Police finalist in POP awards



POLITICAL BEAT

- \$4.2m upgrade for Auckland school
- Kids to honour wartime heroes
- \$4m upgrade for Bayswater School

[The Papamoa Community Surf Rescue Base Trust is turning to the community to help them keep people safe.](#)
[The trust wants to build a new \\$4 million rescue base to replace the current, cramped and outdated building, which the Papamoa Surf Club presently patrols from.](#)



[Click the image above to view slideshow](#)

Papamoa Community Surf Rescue Base Trust chair Jim Pearson with a concept design for the new rescue base. View the slideshow to see more concept designs Photo: Tracy Hardy

Trust chair Jim Pearson is calling on members of the community to pledge their support for the new building by adding their name to a supporters list, which will be presented to the Tauranga City Council during the Annual Plan 2016/17 hearing submissions from April 26-28.

"We're not seeking donations at this stage, we're asking people to visit our website and become a supporter of the club," explains Jim.

"This is basically a way for people to tell council they support our plan and want to see this build happen."

Papamoa is New Zealand's fastest growing suburb and it's projected that 31,337 people will be living in the suburb by 2028. But a boost in population means more demand on essential services, like the surf lifesaving club.

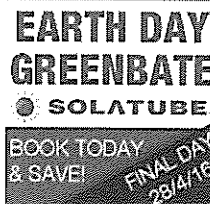
The current base was built in 1990 when the club had 150 members. Fast forward to today, they now have more than 750 members – which is expected to grow to well over 1000 members by 2020.

Jim says the building does not adequately support the club's patrol of the 14km long beach and space is also "at a premium".

For example, equipment is being stored outside in containers or at members' homes, while the lounge is also a changing room, a storage area, and a dining area, he says.

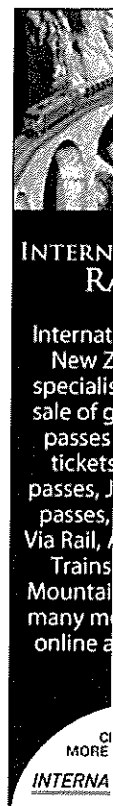
MOST VIEWED THIS WEEK

- Mayhem at Bethlehem
- Girl on bike dies in Matapihi
- Police locate missing Tauranga teen
- Campervan fire claims life
- Highway open after truck crash
- At home in the park
- UPDATED: Cyclist struck on Matapihi Road
- Tauranga woman mourned
- SH2 reopened at Morton Rd
- Park ranger's dismissal upheld
- Reduced stress in Mum's final days
- Chapel St crash slows traffic
- One killed in highway crash
- Quiet girl's death preventable
- Helicopter crashes and burns



MOST COMMENTED

- Park ranger back on the job
- Affordable housing failure
- Country votes to keep current flag
- TECT ranger dispute in court
- Rudd named in Rolling Stone's top 100
- Tauranga gripped by housing crisis
- At home in the park
- DHBs could decide water



COMPETITIONS



Veterans honoured in South Korea

Foreign buyers slip through OIO screen



POLICE BEAT

Incident in Mangawhai Heads

Man arrested for indecent assault

Police search for missing Levin man

Paint the cells

Police investigating Blenheim fires

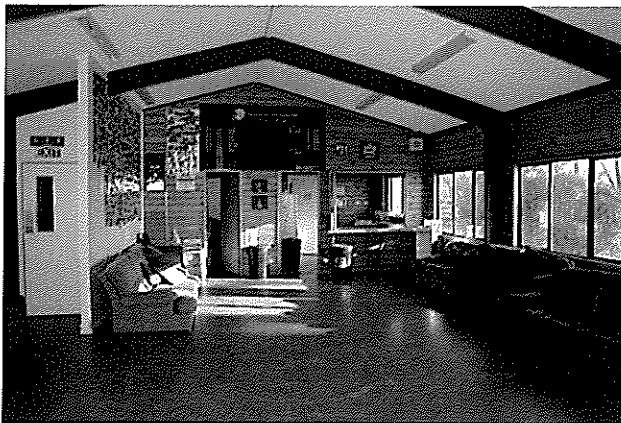
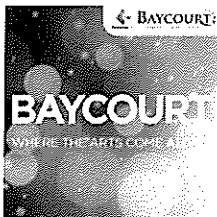
OPINION POLL

What is the driving 'faux pah' that gets your blood boiling?

- ☐ Not indicating at roundabouts
- ☐ Being overtaken unnecessarily
- ☐ Being cut-off
- ☐ Slow drivers

VOTE

RESULTS



The lounge behind the patrol tower also doubles as a change room, a lifeguard patrol stand down area, a training room, an equipment storage area, a meeting room, a hired function room, a gym and a dining area. Photo: Tracy Hardy

"The major change with the new building would be to functional space because our current one is essentially compromised, not just in terms of its size but also the layout.

"There will be a completely different layout as the new building would face the sea which will increase our visual coverage of Papamoa Beach.

"We've also designed the new building in a way that will meet our needs now, but is also adaptable in a way to meet our needs 30 years into the future should they change, future proofing basically."

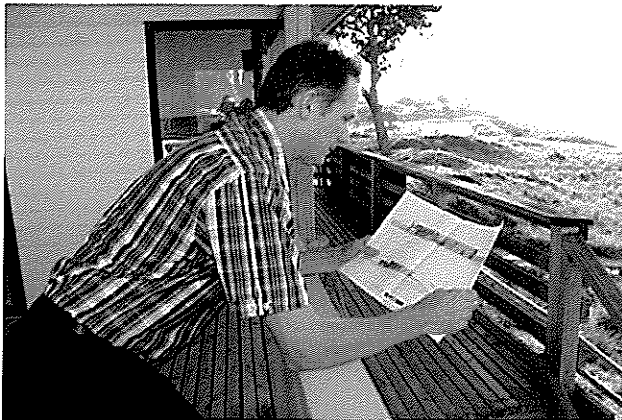
The new base would be more than two times bigger than the current building and would provide improved facilities for training, education, St John as well as the club's emergency response.

Should the trust's submission prove successful, they'll then apply for a resource consent within the next two months before undertaking fundraising for the estimated \$4m building.

The current base would either be salvaged or demolished, with work on the new building commencing in 2017.

The Papamoa Community Surf Rescue Base Trust would build, own and operate the facility, with a sub-lease to the Papamoa Surf Lifesaving Club as the primary tenant.

For more information or to pledge your support visit The Papamoa Community Surf Rescue Base Trust's website at: www.papamoabuild.org.nz



fluoridation

Park ranger's dismissal upheld

Mayhem at Bethlehem

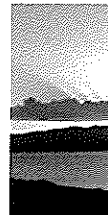


CLICK FOR INFORMATION or email us@thebr

Our preferre

TRAVEL
Travel VUDA
Whan
Sherid
Phone 07
Email travel@t

BAY TODAY



Sunset over Plateau. By 5
Send us your stories from .
Bay of Plenty
photos@the

OH BABY!



Click here to
newest resi